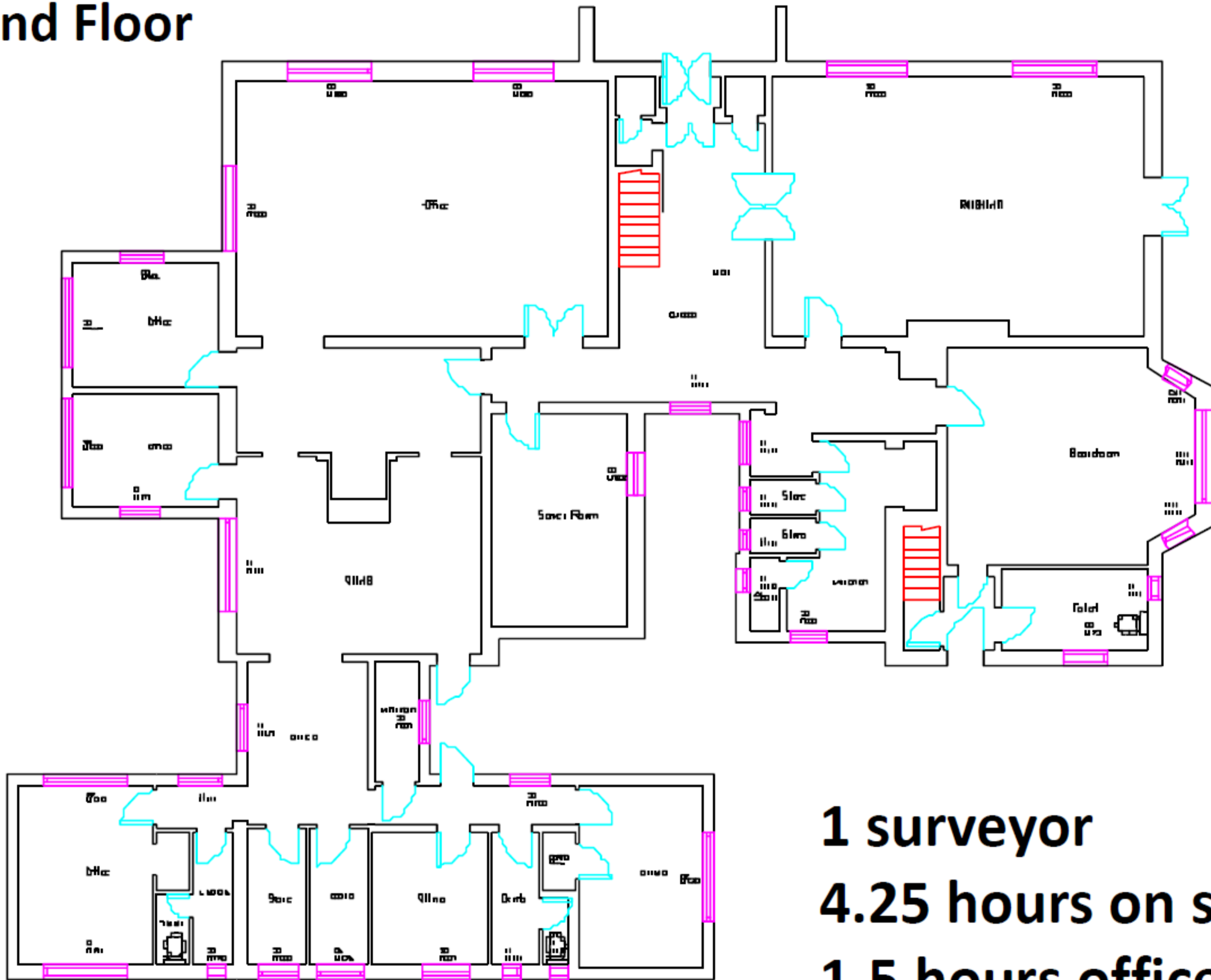


miniPLAN Sample Project

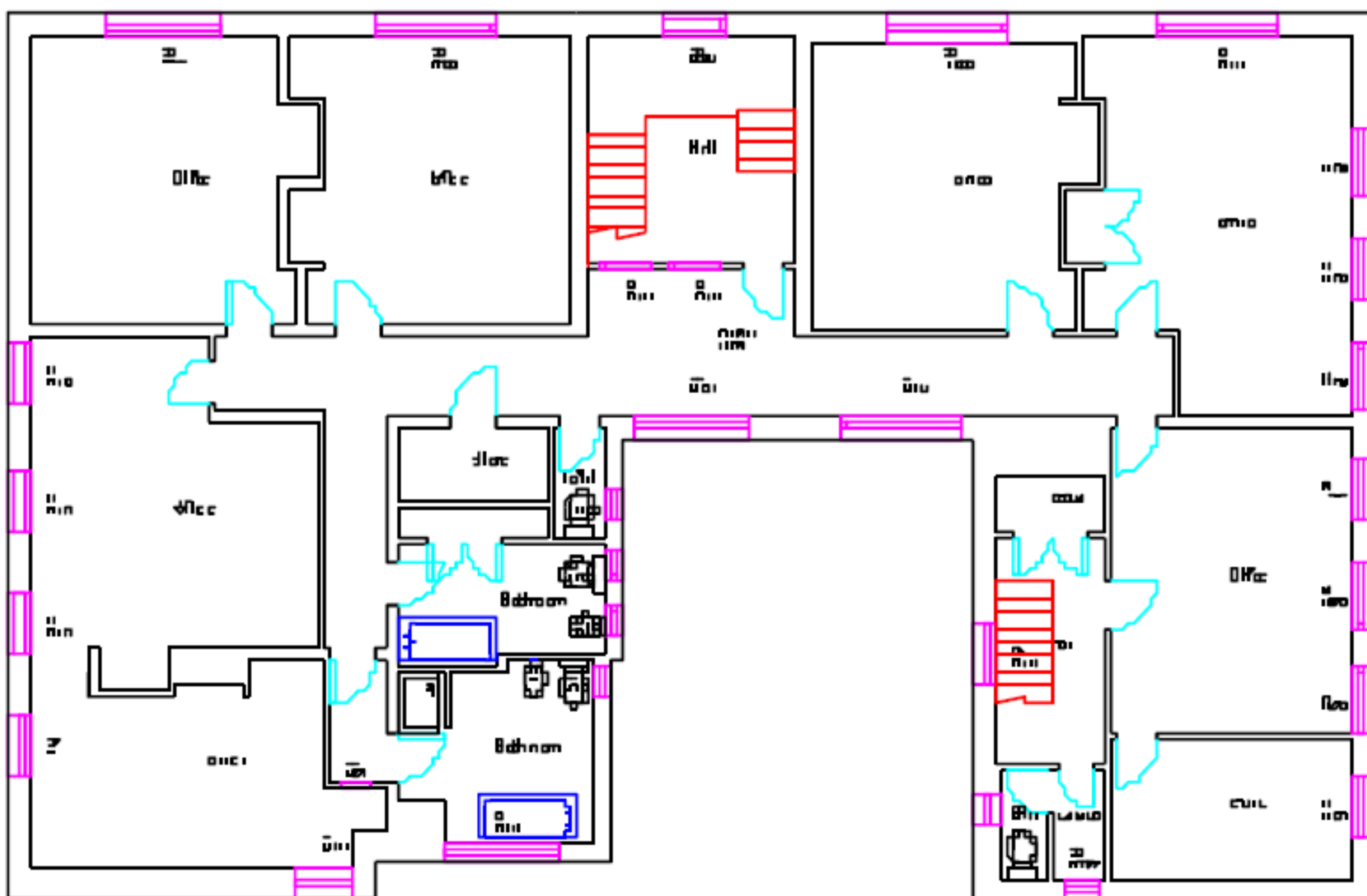
This survey of a 1940's office building near Kidderminster was carried out in August 2009. 1 surveyor using miniPLAN Pro with a DISTO D8 measured the whole building in just 4.25 hours. A further 1.5hrs was spent in the office using AutoCAD LT to finish off the drawing ready for issue to the client. the survey was carried out in the morning and the finished drawings were read for issue before 5pm that day.

Ground Floor



1 surveyor
4.25 hours on site
1.5 hours office time

First Floor



Basement

